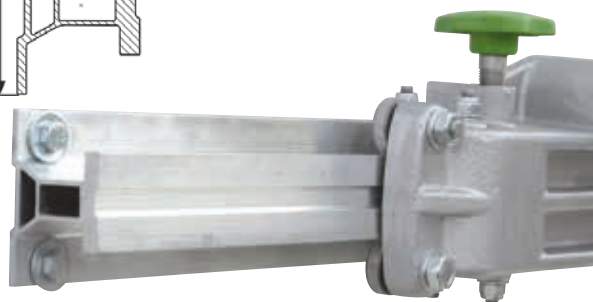
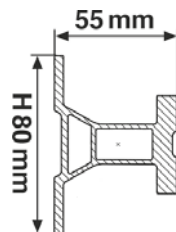
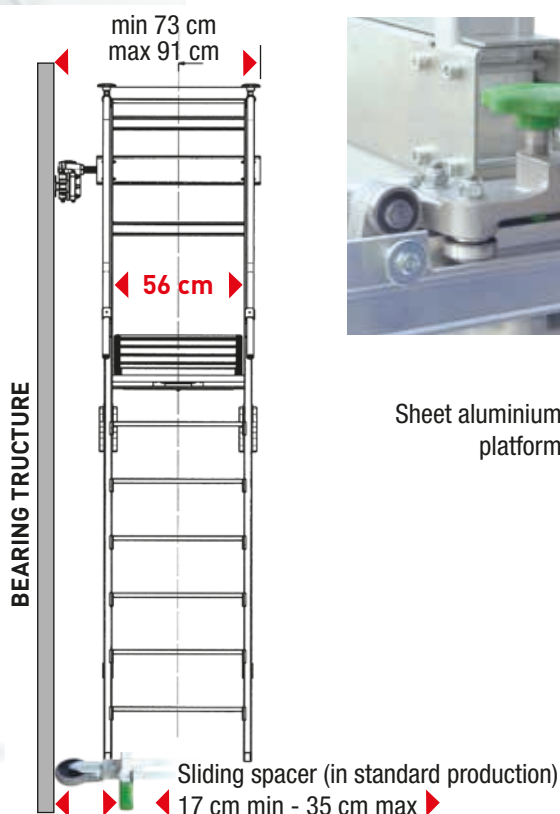
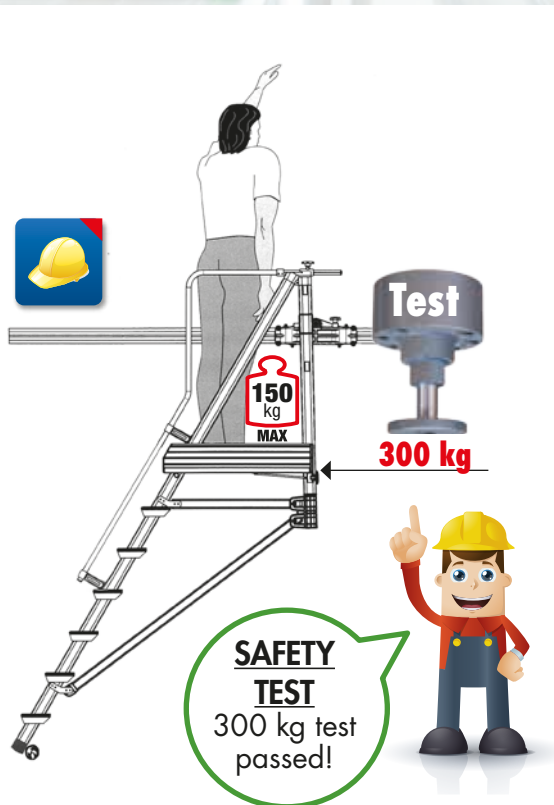


# BINARY

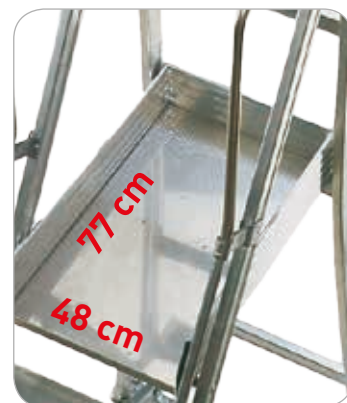
- Aluminium sliding warehouse step.
- Rail can be firmly fixed to wall or to a bearing structure.
- It easily runs on the track thanks to an aluminium die casting carriage composed by 12 bearings.
- Easy to assemble.



Aluminium die casting carriage composed by 12 bearings and 2 green screws



Sheet aluminium platform



Icons representing: Ladder, Step height, Step width, Tread width, Tread depth, Tread length, Total height, Weight, Volume, and Barcode.

Code	treads number	(cm)	(cm)	(cm)	(cm)	(cm)	(cm)	(kg)	(m <sup>3</sup> )	Ean
CA-BY 0/75	3 + plat.	87	192	270	121,5	142	224	47,5	0,15	8028406105725
CA-BY 1/100	4 + plat.	108	213,6	290	134	154,5	249	54,9	0,20	8028406105732
CA-BY 2/125	5 + plat.	133	235,3	310	146,5	167,8	274	59,4	0,31	8028406105749
CA-BY 3/150	6 + plat.	154	259,5	330	159	179,5	299	64,0	0,40	8028406105756
CA-BY 4/175	7 + plat.	174,5	278,6	350	171,5	192	324	66,0	0,45	8028406105763
CA-BY 5/200	8 + plat.	195	300,2	380	184	204,5	340	70,0	0,50	8028406105770
CA-BY 6/225	9 + plat.	219	321,9	400	196,5	217	373	76,0	0,57	8028406105787
CA-BY 7/250	10 + plat.	239,5	343,5	420	209	229,5	399	81,0	0,70	8028406105794

**BIN-CAST** Aluminium rail weight: 2.45 Kg/m





Aluminium tool tray in standard production



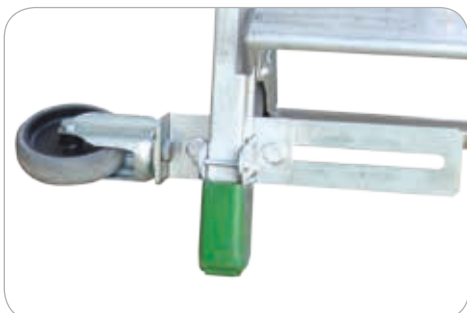
EN131  
EUROPEAN NORM



UPDATE NEW NORM EN131: 01/18



150 mm non-slip aluminium treads.  
Exclusive stile/tread connection through 10 points, without welding



Adjustable sliding spacer  
17 cm min – 35 cm max