

S15/2 System

- Aluminium shelf ladder.
- Front side with 60° slope for a more comfortable climbing.
- It can be fitted with various accessories.



Fixed handrail support
(Code FU-016)

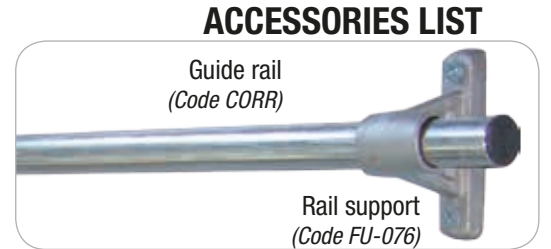
Ø 25 mm handrail
(Code MAN)



Standard short hook
(Code FE-011)



Hook for parked position
(Code FE-010/1)

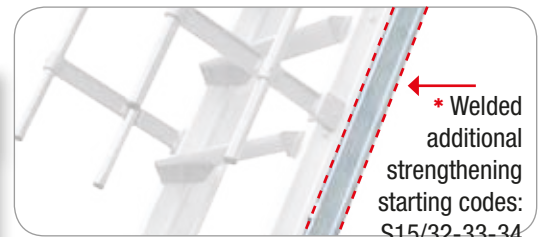


Guide rail
(Code CORR)

Rail support
(Code FU-076)



Double handrail support (Code FU-037)



* Welded additional strengthening starting codes: S15/32-33-34

	A1	A2	A3	B			
--	----	----	----	---	--	--	--

WITH ARTICULATED FEET - WITHOUT STABILISING BAR

Code	treads number	(cm)	(cm)	(cm)	(cm)	(kg)	(m ³)	Ean
S15/21	6	175	275	149	105	13,0	0,21	8028406000303
S15/22	7	200	300	173	115	14,8	0,24	8028406000310
S15/23	8	225	325	198	120	16,7	0,26	8028406000327
S15/24	9	250	350	217	132	18,5	0,29	8028406000334
S15/25	10	275	375	238	144	20,4	0,32	8028406000341
S15/26	11	299	400	261	155	22,3	0,35	8028406000358

WITHOUT STABILISING BAR - WITH ARTICULATED FEET (if ladder fixed to the wall)

S15/27	12	325	425	280	162	24,1	0,38	8028406000365
S15/28	13	350	450	307	177	26,0	0,41	8028406000372
S15/29	14	375	475	330	190	27,8	0,44	8028406000389
S15/30	15	400	500	349	205	29,7	0,47	8028406000396
S15/31	16	425	525	372	226	31,5	0,50	8028406000402
S15/32-R	17	450	550	390	240	39,8	0,53	8028406106760
S15/33-R	18	475	575	414	254	42,5	0,56	8028406106777
S15/34-R	19	500	600	436	267	44,0	0,59	8028406106784

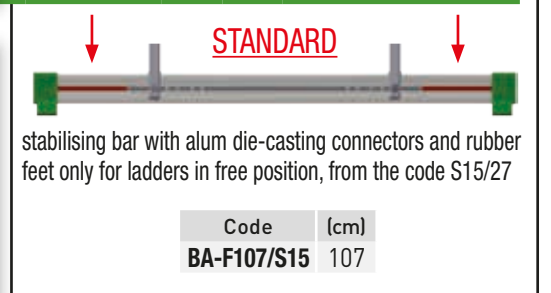
--	--	--

WITH STABILISING BAR FROM PRODUCTION 2018 (if ladder in free position)

Code	(cm)	(kg)	Ean
S15/27B	107	24,1	8028406111825
S15/28B	107	26,0	8028406111832
S15/29B	107	27,8	8028406111849
S15/30B	107	29,7	8028406111856
S15/31B	107	31,5	8028406111863
* S15/32-RB	107	39,8	8028406111870
* S15/33-RB	107	42,5	8028406111887
* S15/34-RB	107	44,0	8028406111894

ACCESSORIES

FU-016	Fixed handrail support	8028406106463
FU-109	Folding handrail support	8028406106470
FU-076	Aluminium rail support	8028406106487
FU-037	Handrail double support	8028406106753
MAN	Ø 25 mm aluminium handrail	8028406106494
CORR	Ø 25 mm aluminium guide rail	8028406106500
FE-011	Standard short hook	8028406004134
FE-010/1	Hook for parked position	8028406106517
S15/D15	Welded spacers	pair 8028406106524
S15-MCSTD	Standard top handrails with clutches	pair 8028406106531
S15-MCVER	Vertical top handrails with clutches	pair 8028406106548
PL-228	Sliding castors with aluminium support	pair 8028406106555



ACCESSORY:
Vertical top handrails

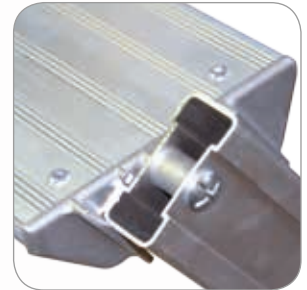


150 kg
MAX

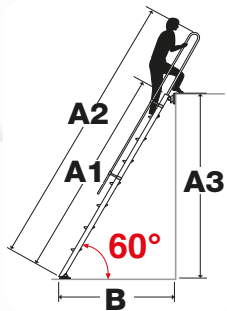
EU EN131
EUROPEAN NORM



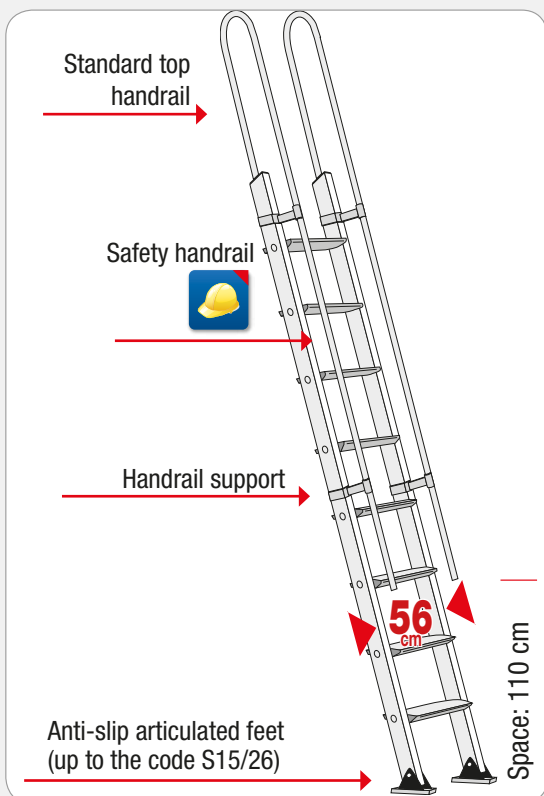
UPDATE NEW NORM EN131: 01/18



150 mm non-slip aluminium treads.
Exclusive stile/tread connection through 10 points, without welding



STANDARD PRODUCTION



60° SLOPE
for a comfortable climbing

Articulated feet without stabilising bar up to the code S15/26. Other sizes only for fixed ladders to the wall