

“PRIMA”

- Aluminium treads leaning ladder.
- Especially recommended for interior works and as shelf-ladder.



Plug-in top feet.

150 kg MAX



EN131 EUROPEAN NORM



UPDATE NEW NORM EN131: 01/18

Stile/treads connection through double expansion mechanism



85 mm non-slip treads

ACCESSORIES

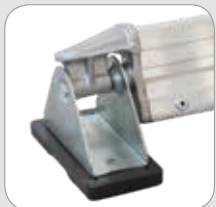


55x120 mm

Articulated foot



Steel hooks
Code: FE-119/A



Alum die casting connector with small articulated foot for stabilizing bar
Code: PSP/B

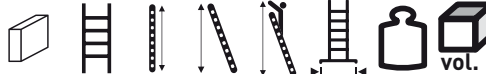
Stabilising bar from the code PM 355/LB



85 mm

Code PM 265/L

45 cm



WITH ARTICULATED FEET - WITHOUT STABILISING BAR

Code	(mm)	N.gr.	(cm)	(cm)	(cm)	(cm)	(kg)	(m ³)	Ean
PM 205/L	25x65	6	200	190	295	-	4,30	0,06	8028406001928
PM 265/L	25x65	8	260	245	355	-	5,50	0,07	8028406001935
PM 295/L	25x65	9	290	275	385	-	7,00	0,08	8028406001942

WITH STABILISING BAR FROM PRODUCTION 2018

PM 355/LB	25x65	11	350	330	445	89	8,40	0,10	8028406111337
PM 411/LB	25x65	13	410	385	500	89	9,50	0,12	8028406111344
PM 445/LB	25x65	14	440	415	535	107	10,30	0,13	8028406111351
PM 505/LB	25x65	16	504	470	595	107	12,70	0,15	8028406111368
PM 561/LB	25x65	18	565	525	650	107	13,50	0,16	8028406111375
PM 595/LB	25x80	19	597	555	685	107	14,60	0,21	8028406111382
PM 655/LB	25x80	21	656	610	745	120	15,70	0,24	8028406111399

PSP/B	Alum die casting connector with small articulated foot for stabilizing bar	8028406112303
FE-119/A	Steel hook	8028406106579

This product is delivered with a PVC wrap film and product leaflet

